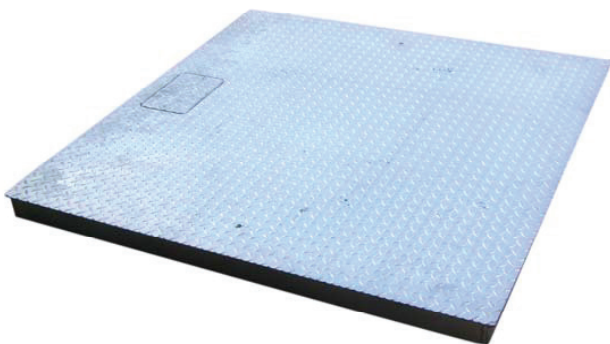




*Weigh Pack Electrical*

# KLP-G-3000-1200 GALVANISED PLATFORM SCALE

Kelba's KLP-G-3000-1200 x 1200mm NMI (Trade Approved) platform scale provides low cost fast accurate weighing of bulk goods. Built in Australia the KLP-G-3000-1200 is built using a simple multiple cross bracing using 8 x 10mm x 60mm flat bar construction, eliminates any deflection. This also allows for odd size custom scales to be made simply and at a cost effective price. It's clean under plate design eliminates product entrapment. Easy electronic corner adjustment can be done via accessing the stainless steel junction box via access hatch in the top deck.



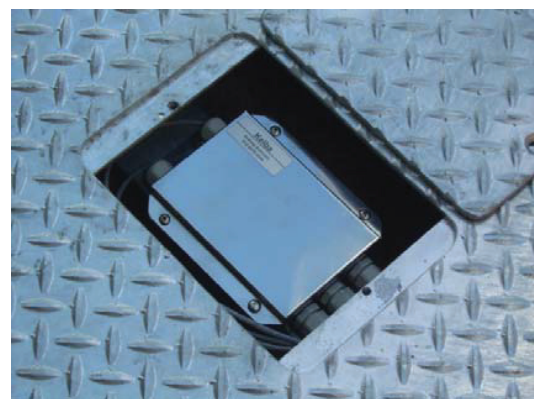
**KLP-G-3000-1200 Platform Scale**



**Ball & Cup Feet**



**Underneath Flat Bar Construction**



**KLP-G-3000-1200 Series stainless junction box access**

## Features

- Australian Made
- Galvanised Finish
- NMI approved
- Low Cost
- Flat Bar Construction
- Adjustable ball & Cup Feet
- Stainless Steel Junction box
- Kelba KH8C31000 - IP67 load cells
- Level bubble equipped
- Custom off sizes available up

## Specifications

Model	Capacity	Gradations	Display	Finish	Shipping Weight
KLP-G-3000-1200	1500kg 3000kg	0.5kg 1kg	1200mm x 1200mm	Galvanised	130kg

<b>Junction box access</b>	Via side drawer
<b>Operating Temperature</b>	-20°C to +60°C platform scale only
<b>Storage Temperature</b>	0°C to 50°C
<b>Operating Humidity</b>	85% R.H
<b>Display Reading</b>	Indicator dependant
<b>Platform Scale NMI Approval</b>	6/9C/304
<b>Loadcell NMI Approval</b>	S471
<b>Feet</b>	Ball & cup feet adjustable
<b>Junction box</b>	Stainless Steel
<b>Warranty</b>	1 Year excluding loadcells which are 3 years

**Email:** [Sales@weighpackelectrical.com.au](mailto:Sales@weighpackelectrical.com.au)  
[Service@weighpackelectrical.com.au](mailto:Service@weighpackelectrical.com.au)

**Phone:** 0488 199 318